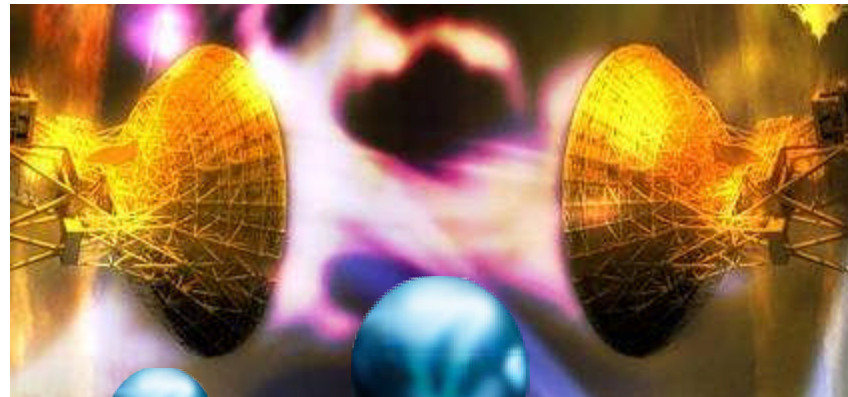


# Partner for Sophisticated Electronic Repair



**Transportation Industry (Railways)**



# Repair Services for Railways

## (Metro Transit System)

- **AC/DC EMU TRACTION SYSTEM for Trains - M/S Traxys, M/S Schneider Automation, M/s. Alsthom**
  - FAH 5A., FAH 5 B
  - LSB 2A, 2B, 2C
  - 20/50 KVA Inverter Control Cards
  - BADU Cards
- **20/ 50 KVA Inverters and Battery Charger - M/S Emotron/ BHEL**
  - Control Card
  - SMPS Card
- **Module Drive Control – M/s. Alsthom / M/s. Traxys**
  - LQC 1A,LQC 1B, MPR-6, PBI, TTI, IO6 & ANL-12 Cards
  - CPU,MVP,VME (Mother Board), BDAP 258,BDEP 257C, MVB 258A,BDAP 250, DDU.





# Repair Services for Railways

(Metro Transit System)

**3-Phase Locos WAG9 / WAP7 / WAP5 (MITRAC 3000) – ABB  
Bombardier. Complete Test Facility for repairs & testing of following  
systems of 3-phase locos:**

- **KUB 921 Power Supply Card**
- **KUA 915 Power Supply Card**
- **KYA 924 Power Supply Card**
- **KUC 153 Power Supply Card**
- **UAB 630 A36 Signal Conditioning Board – SLG**
- **UAB 630 A91 Signal Conditioning Board – NSC**
- **UAB 630 A93 Signal Conditioning Board – ASC**
- **PPB 622 SLG Single Board Computer**
- **PPA 988 NS AS Controller Card**
- **AFB 635 GTO Optic Pulse Card**
- **URB 177 Digital I/O Board**
- **GVA 587 Gate Unit**
- **PPB 908 Display Computer Board**
- **URB 512 Digital I/O Board**
- **PPB 624 Diagnostic Computer Board**





# Repair Services for Railways

(Metro Transit System)

## **3-Phase Locos WAG9 / WAP7 / WAP5 (MITRAC 3000) – ABB Bombardier. Complete Test Facility for repairs & testing of following systems of 3-phase locos:**

- **Signal Transfer Board, ARB705 B01**
- **Bur Power Supply, KVB993A01**
- **Train Bus Administrator, PPA425B01**
- **BUR Processor PPB471 A02**
- **Bus Administrator, PP B626 B01**
- **Rectifier & Inverter Control (GG + WR), RD B472 A01**
- **Peripheral Inverter Control (WR), UAB476 A01**
- **Analog I/O Card, UAB514 B33**
- **Signal Bus Coupler, UF B701 A01**
- **Temperature Sensor Print, XB C029 A01**
- **Line Convertor Control I/O, XV A987 C22**
- **Drive Control Inverter Control I/O, XV A987 C22**
- **WRE Gate Card, XVB175 B32**
- **Multiple redundant Bus Coupler, UFB660**
- **Train Bus Interface, LAA424**

